

## Benefits

Welcome to Shore Loyalty Program! We would like to reward our frequent diners for your continuous support by offering exclusive benefits and privileges.

## Discounts:

- **15 %** year-round offer on a la carte items for dine-in and takeaway at any one of our Shore Hospitality brands  
Loyalty Discount cannot be used with any other promotion items.

## Points & Rewards:

- **1 point** can be earned for every **HK\$1** spent (excluding service charge and gratuity).  
Points does not apply to any other promotion items.
- Rewards can be redeemed starting from **2500** points.

## Birthday Offer:

- Enjoy **1** bottle of complimentary wine upon spending **\$300** (exclude **10%** service charge) (before Loyalty Discount) on a la carte dine in during birth month  
(Member will require to show HKID/Passport for proof of birthdate)
- On birth month, Members who dine-in can enjoy one free birthday Dessert  
(item chosen by Shore Hospitality Staff, Member will require to show HKID/Passport for proof of birthdate)

## Exclusive Events:

- Invitations to games to win prizes, and unique events

## Redemption:

- **2500 POINTS**, free set Lunch for one (starter, main, coffee/tea)
- **4000 POINTS**, one bottle of house wine
- **4500 POINTS**, gift voucher at **\$450** used at anyone of our participating brands at Shore Hospitality Group
- **7000 POINTS**, one bottle of champagne
- **20,000 POINTS**, Dine in at anyone of our Shore Venues for up to **6** people valued at **\$500** per head. (does not include **10%** service charge), Bookings can be made between Monday To Thursday and not used in conjunction with any other offers or discounts.
- **100,000 POINTS**, a **4** course Fine Dining meal curated by our Executive Chef catered at the comforts of your own home. Maximum **8** people, to add additional people **\$1000** per head.

### ★ 2500 POINTS



free set Lunch for one  
(starter, main, coffee/tea)

### ★ 4500 POINTS



gift voucher at **\$450** to enjoy  
in any of our venues

### ★★ 20,000 POINTS



dine in at anyone of our Shore Venues  
for up to **6** people valued at **\$500** per head

### ★★★ 100,000 POINTS



**4** course Fine Dining meal curated by our  
Executive Chef catered at the comforts of  
your own home

### ★ 4000 POINTS



one bottle of house wine

### ★ 7000 POINTS



one bottle of champagne

## Terms & Conditions:

- Members are required to present a valid membership (physical card or online virtual card) before settling bills to earn points and redeem the offers, and the offers are limited to one per person per bill.
- The promotions and privileges cannot be redeemed or exchanged for cash.
- The discount cannot be used in conjunction with any other promotions or offers.
- The 15% discount applies to a-la-carte menu items for dine-in or takeaway.
- Each individual is entitled to hold one Shore Loyalty Membership at any one time.
- The Shore Loyalty Membership is for the use of the registered holder only. It is non-transferable.
- Points earned are for the holder's benefit only and cannot be transferred to a third party or another Shore Loyalty Member.
- Maximum of 10,000 points will be credited to the member's account for each booking or event.
- All points will expire on March 31st of each year (April 1st points start at 0)
- Shore Hospitality has the right to decline applications, re-issue or terminate a Shore Loyalty Members account at any time with or without cause.
- By submitting your application, you will receive news and promotional material from Shore Hospitality via email. If you want to unsubscribe or update your information, please unsubscribe directly from our newsletter. Please note our email newsletter provides information and notices regards to your membership, unsubscribing would mean a cease of these notices.
- Shore Hospitality collects your personal information for purposes directly related to our functions or activities including obtaining your feedback and for marketing.
- Shore Hospitality reserves the right of final decision on the interpretation of these Terms and Conditions and any disputes regarding this Loyalty Program.

## 網站

歡迎加入“Shore會員計劃”！我們透過提供獨家優惠和積分獎勵經常惠顧的食客，答謝他們一直的支持。

## 折扣：

- 全年惠顧Shore Hospitality 集團旗下餐廳主餐牌堂食或外賣自取均獲85折，會員計劃折扣優惠不能與其他推廣同時使用。

## 分數及獎勵：

- 每消費1港元可賺取1積分（不包括服務費和小費）。
- 獎勵可以從2500分開始兌換。

## 生日優惠：

- 於生日月份堂食惠顧主餐牌滿\$300以上(不包括加一服務費)(會員折扣前)可免費獲贈葡萄酒乙枝（會員需要出示香港身份證 / 護照以證明出生日期）
- 於生日月份惠顧堂食會員可以免費享用甜品乙份（由Shore Hospitality員工指定款式，會員需要出示香港身份證/護照以證明出生日期）

## 獨家活動：

- 邀請參加遊戲以贏取獎品和參加獨家活動。

## 積分兌換獎勵：

- 2500分，一人享用午市套餐（頭盤，主菜，咖啡/茶）
- 4000分，餐酒乙枝
- 4500分，價值港幣\$450回贈，可在Shore Hospitality集團旗下任何餐廳使用
- 7000分，香檳乙枝
- 20,000分，在Shore Hospitality集團旗下任何餐廳用餐，用餐人數上限為6人，每人免費餐飲限額為港幣\$500（不包括10% 服務費）。可預定週一至週四（不適用於公眾假期），不可與任何其他優惠或折扣同時使用。
- 100,000分，由我們的行政總廚上門為你精心烹調4道菜餐單，讓您在舒適的環境享受美食，用餐人數上限為8人，額外增加每人收費港幣\$1000。

### ★ 2500分



一人享用午市套餐  
(頭盤，主菜，咖啡/茶)

### ★ 4500分



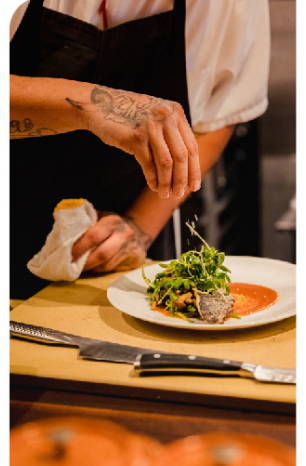
價值港幣\$450回贈，可在 Shore Hospitality集團旗下任何品牌使用

### ★★ 20,000分



在Shore Hospitality集團旗下任何餐廳用餐，用餐人數上限為6人，每人免費餐飲限額為港幣\$500

### ★★★ 100,000分



由我們的行政總廚上門為你精心烹調4道菜餐單

### ★ 4000分



餐酒乙枝

### ★ 7000分



香檳乙枝

## 條款及細則：

- 在每次結算賬單前，會員必須出示有效會員卡（實體或網上卡）才能賺取積分和兌換積分獎勵，兌換限於每人每張賬單乙次。
- 優惠推廣和獎勵不能兌換或轉換成現金
- 折扣不能與其他任何促銷或優惠同時使用
- 惠顧主餐牌堂食和外賣自取可獲得85折
- 每個人任何時間只可以持有Shore Hospitality會員資格乙個。
- Shore Loyalty會員資格僅適用於註冊持有人，不可轉讓。
- 所賺取積分及兌換獎勵僅適用於會員持有人，不能轉讓給第三方或其他會員。
- 每次預訂或惠顧上限為10,000分記入會員的帳戶。
- 所有積分將在翌年3月31日自動失效。(由翌年4月1日由0重新計算)
- Shore Hospitality有權在無理由及無通知情況下隨時拒絕會員申請，重新發行或終止旗下會員帳戶。
- 當提交會員申請，將自動同意收到Shore Hospitality以電郵方式提供的會員資訊和最新促銷資訊。如果閣下不想收取的信息，請直接取消訂閱我們的會員通訊。請注意，我們以電子郵件通知閣下有關會員資訊，取消訂閱將等於無法接收通訊，我們不負責任何後果。
- Shore Hospitality收集您的個人信息用於與相關市場營銷推廣或活動，包括集取您的意見反饋和進行市場推廣活動。
- Shore Hospitality保留以上條款和解釋以及與本會員計劃有關的任何爭議的最終決定權。